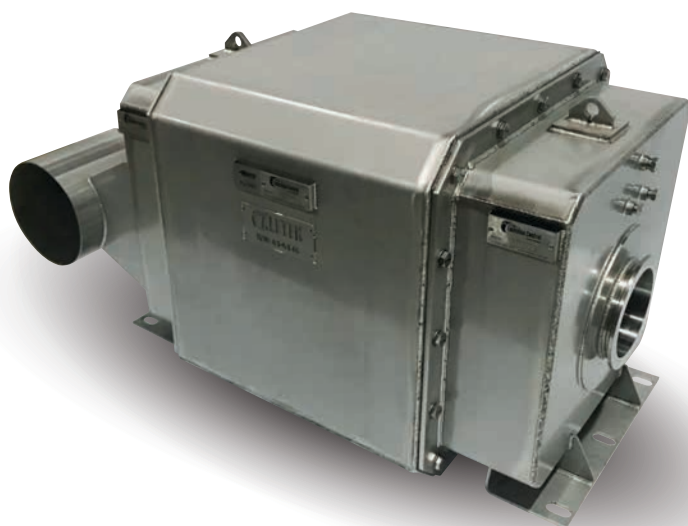




PRODUCT SPECIFICATIONS

DPF TO SUIT ATLAS COPCO MT6020 (QSK19)



DIRECT-FIT DPF UPGRADE FOR MT6020

Aletex's DPF system is a direct-fit replacement for in-line installation on MT6020 Minetrucks. This system improves air quality, exhaust performance and efficiency.

- Compatible with Cummins engine specifications
- Wall-flow DPF with regenerative catalyst coating
- Heavy-duty stainless steel
- Premium North American filters
- >99% DPM emission reductions
- Extended service life and reduced cleaning costs
- Oversized filters to prevent low power and backpressure issues



Safer air for underground



Direct-fit system



Trap diesel particulates



Premium grade filters



Reduced backpressure



Extended service life



Plug & Play data logger



Designed for in-line replacement and integration with existing exhaust system



Data logger records backpressure, exhaust gas temperature and engine RPM



Optional rotatable frame for superior protection in transit and storage



GLOBAL HEAD QUARTERS
Queensland, Australia
T 1300 886 628
sales@aletex.com.au
www.aletex.com.au

AUSTRALIA
New South Wales
Queensland
Victoria
Western Australia

USA
Arizona
California
Utah

STH AMERICA
Chile
Colombia
Peru

INDONESIA
Kalimantan



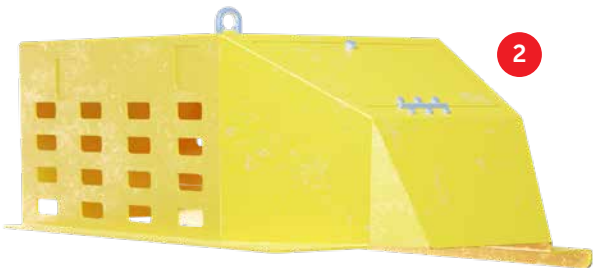
PRODUCT SPECIFICATIONS

DPF TO SUIT ATLAS COPCO MT6020 (QSK19)



1 DPF TO SUIT MT6020 (QSK19)	
Integration	Direct-fit replacement
DPM Emission Reductions	>99% (by count)
Gaseous Emission Reductions	>90% CO, 60-80% HC/VOCs
OEM Compliance	Meets Cummins specifications
Product Lifecycle	<20,000 hours
Warranty	12 months
Part No.	273-567 (DPF Group)

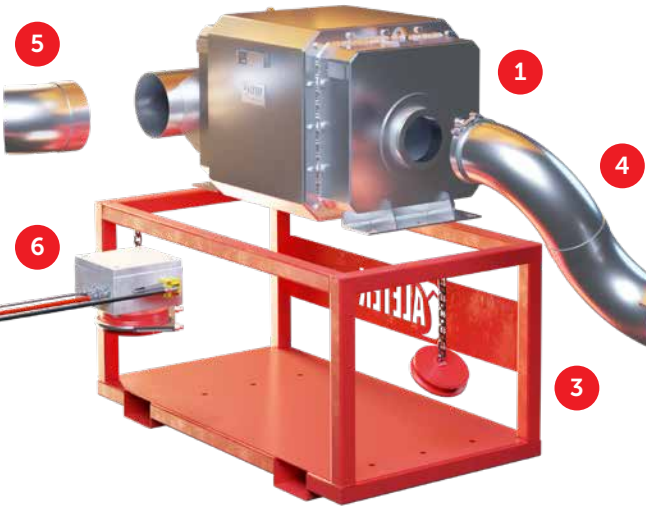
DPF SYSTEM COMPONENTS



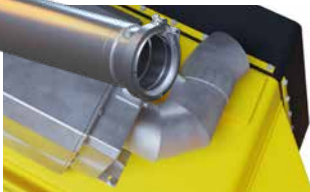
2 ROCK COVER	
Construction	6mm plate steel
Features	Lifting points, access panel
Surfacing	Polyurethane
Part No.	287-223



3 ROTABLE FRAME (Option)	
Branding	Site logo
Features	Forklift points, sealing caps
Finishing	Custom colour



4 ENGINE PIPE (Option)	
Part No.	264-152



5 TAIL PIPE (Option)	
Tail Pipe P/N	240-454
Clamp P/N	329-494

DPF DATA LOGGER



Plug & Play data logger



Data port for Download



6 DPF DATA LOGGER	
Enclosure	Stainless Steel IP66
Monitor	Record backpressure, engine RPM, exhaust gas temp.
Wiring	Plug and Play harness
Cable Fittings	Mil-Spec cable terminations with cannon fittings
Hoses & Sleeves	Stainless braided Teflon hose, fire-rated sleeve
Download	Dash-mounted data port