



The following visual guide depicts examples of typical thermal blanket conditions. This sheet should be viewed alongside our service checklist on our Fitting Tips Cheat Sheet and/or Blankets Install & User Guide. Aletek recommends a monthly visual condition inspection as part of your ongoing fire mitigation strategy.

## ACCEPTABLE CONDITION

### ACTIONS – MONITOR/FIX AS NOTED

Blankets in acceptable condition may have cosmetic blemishes but are still able to serve their intended purpose. As these are a wear and tear product condition should be monitored monthly for future re-fitting or replacement.

SOILED BUT FUNCTIONAL



**ABOVE** Residual dirt build-up and low-level soot are typical (1,2,6). Investigate prominent soot on blankets for engine pipe leaks (3,7). Eliminate gaps and refit blankets (8) for a snug-fit and maximise coverage (4). Monitor blanket condition during ongoing maintenance.

## AVERAGE CONDITION

### ACTIONS – REPLACE WITHIN 6-MONTHS

Blankets in average condition should be monitored and replaced within 6-months. Issues such as missing springs or fitment issues should be resolved now. See our Fitting Tips sheet and Install & User Guide for maintenance tips.

WORN – MONITOR CONDITION, REPLACE SOON



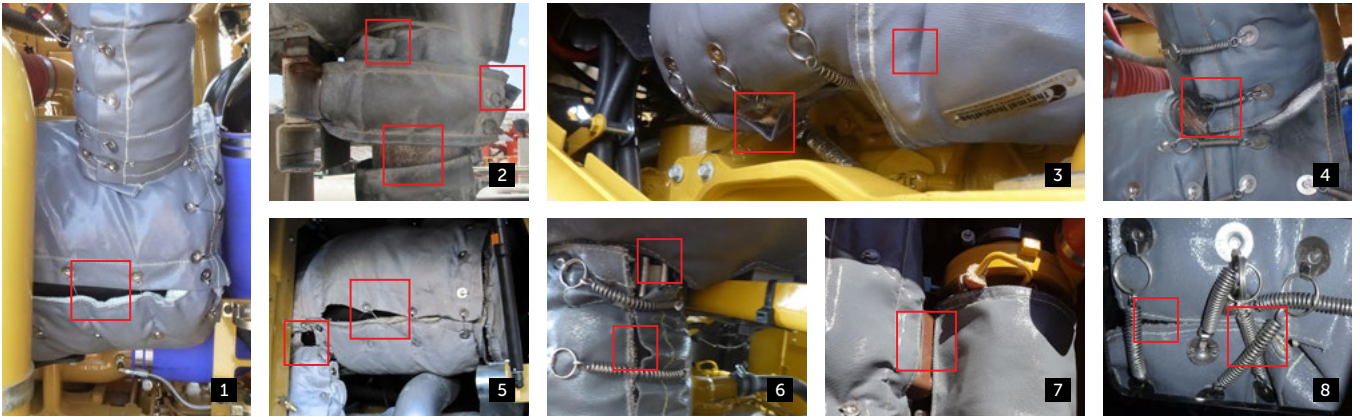
**ABOVE** Fix and refit blankets to avoid hot spots from gaps (1,6,8). Refit/replace stretched springs and loose tie-wire (4,6,8). Monitor and schedule replacement for wear (9), soot marks (2,3,8-11) and irreparable/loose fitments (8). Investigate burn marks for exhaust leaks (1,8).





## GOOD CONDITION – FITMENT ISSUES

## ACTIONS – FIX AS NOTED



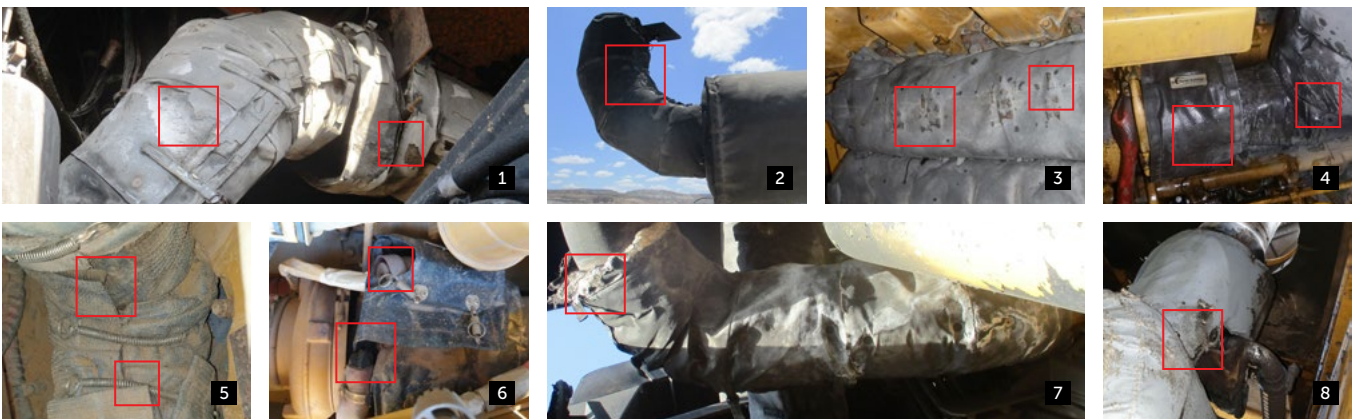
**PHOTOS 1-8** Poor fitment (1,3,8), excessive gaps (2-5,7), and poor install techniques (8) create hot spots. Eliminate gaps and ensure blankets are snug-fitting and maximise coverage. Check springs are connected, tie-wires secured, and replace missing springs.

## POOR CONDITION

## ACTIONS – REPLACE/FIX NOW

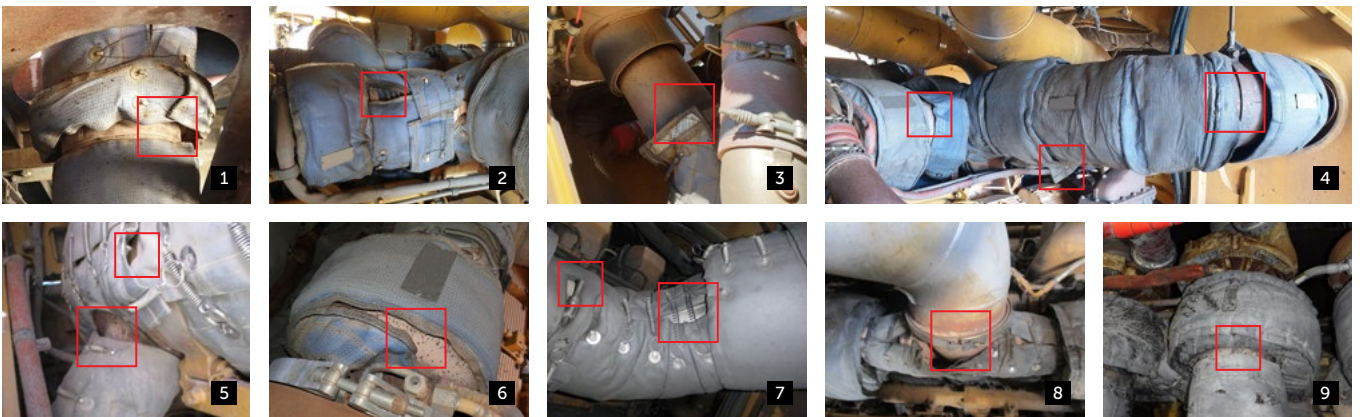
Blankets in poor condition should be fixed/replaced now. Rectify poor fitments immediately. If blankets are soaked in oil, diesel or coolant it is almost impossible to remove all traces of contaminants – replace now.

DAMAGED – REPLACE NOW



**PHOTOS 1-8** Replace blankets that are damaged (1,7), oil/fuel contaminated (4,7), excessively worn (7,8) and poor fitting (5). Replace damaged sections and contaminated sections (by flammable fluids) that can't be sufficiently cleaned.

POOR FIT/DAMAGED – FIX NOW



**PHOTOS 1-9** Assess poor fitment alongside blanket condition. Fix gaps (5,7) and assess if fit-for-purpose. Replace overworn and baggy-fit blankets (2,4,8). Replace damaged blankets and missing sections (3,6,9). Consider upgrading tie-wire to springs for a snug fit (1,2).

Blankets Cheat Sheet | Condition Tips | January 2025



**GLOBAL HQ**  
 Queensland, Australia  
 sales@aletek.com.au  
 aletek.com  
 1300 886 628

**AUSTRALIA**  
 New South Wales  
 Queensland  
 Victoria  
 Western Australia

**NORTH AMERICA**  
 California  
 Colorado  
 1 833 232 2073

**LATAM**  
 Chile  
 Colombia  
 Peru  
 +57 (313) 4855769

**INDONESIA**  
 Jakarta  
 Balikpapan  
 Surabaya  
 Batam  
 +62 542 3000 018