



PRODUCT SPECIFICATIONS

DIRECT-FIT EXHAUST FOR CAT 789B/C (3516)

BLANKETS
TECH SHEET
AVAILABLE



DIRECT-FIT EXHAUST SYSTEM FOR CAT 789B/C

Aletex's exhaust system is a direct-fit replacement for Cat 789B/C trucks. Our exhausts offer improvements to known OEM fatigue zones for durability and extended lifecycle.

- Solid machined flanges prevent cracking on engine pipe ends
- Compatible with Cat engine specs
- Exhaust pipes and components interchangeable with OEM parts
- Australian made and designed
- In-stock components clamps, V-bands, bellows, tube pipe, etc
- Thermal insulation blankets available for fire mitigation

100%
COMPATIBLE

Interchange with OEM parts



Direct-fit system



Extended product lifecycle



Australian made



Fatigue zones improved



Mitigate fire with blankets



Competitive pricing compared to OEM products with long-term cost savings



Compatible with OEM parts and backed by our Direct-Fit Replacement Guarantee



Mitigate the risk of engine fires by adding blankets to critical heat components



GLOBAL HEAD QUARTERS
Queensland, Australia
T 1300 886 628
sales@aletek.com.au
www.aletek.com.au

AUSTRALIA
New South Wales
Queensland
Victoria
Western Australia

USA
Arizona
California
Utah

STH AMERICA
Chile
Colombia
Peru

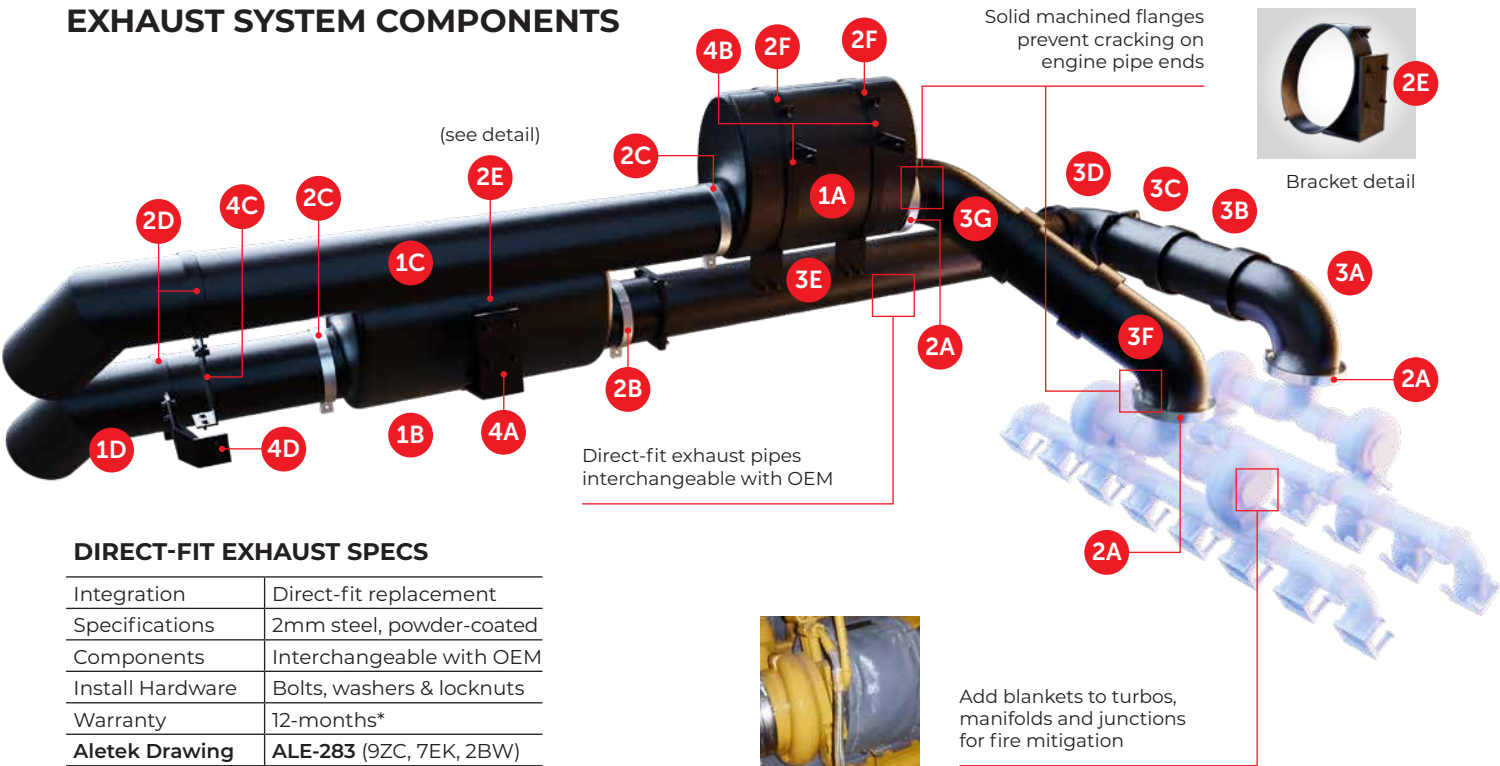
INDONESIA
Kalimantan



PRODUCT SPECIFICATIONS

DIRECT-FIT EXHAUST FOR CAT 789B/C (3516)

EXHAUST SYSTEM COMPONENTS



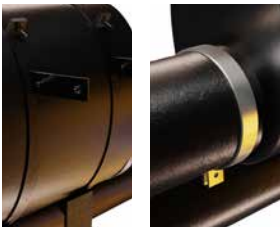
DIRECT-FIT EXHAUST SPECS

Integration	Direct-fit replacement
Specifications	2mm steel, powder-coated
Components	Interchangeable with OEM
Install Hardware	Bolts, washers & locknuts
Warranty	12-months*
Aletek Drawing	ALE-283 (9ZC, 7EK, 2BW)



1 MUFFLERS

Integration	Direct-fit
1A Muffler P/N	266-409
1B Muffler P/N	298-918
1C Tail Pipe P/N	226-607
1D Tail Pipe P/N	251-987



2 CLAMPS & STRAPS

2A V-Band P/N	399-250
2B Clamp P/N	364-554
2C Clamp P/N	377-494
2D Clamp P/N	220-662
2E Strap P/N	205-722
2F Strap P/N	207-120



3 ENGINE PIPES

Integration	Direct-fit
3A E/Pipe P/N	286-202
3B E/Pipe P/N	281-402
3C E/Pipe P/N	255-628
3D E/Pipe P/N	225-911
3E E/Pipe P/N	236-546
3F E/Pipe P/N	290-199
3G E/Pipe P/N	276-925

4 BRACKETS

4A Bracket P/N	252-293
4B Bracket P/N	256-969
4C Bracket P/N	205-716
4D Bracket P/N	274-929

THERMAL BLANKETS UPGRADE



BLANKETS FOR 789B/C (Option)

The Aletek Advantage	Quick-fit springs, reduced install time, snug fit, non-itch
Improved Safety	Reduced surface temps
Aletek Drawing	ALE-2984 (2BW, 7EK, 9ZC)
Complete Kit P/N	181-491
Manifold Group P/N	195-557
Turbo Group P/N	138-433
Junction Group P/N	124-153
Engine Pipe Group	197-163