



PRODUCT SPECIFICATIONS

## DIRECT-FIT EXHAUST FOR CAT 793C (3516)

BLANKETS  
TECH SHEET  
AVAILABLE



### DIRECT-FIT EXHAUST UPGRADE FOR CAT 793C

Aletex's exhaust system is a direct-fit replacement for Cat 793C trucks. Our exhausts offer improvements to known OEM fatigue zones for durability and extended lifecycle.

- Solid machined flanges prevent cracking on engine pipe ends
- Strategically located vent ports prevent failure of inner pipe skin
- Compatible with Cat engine specs
- Exhaust pipes and components interchangeable with OEM parts
- Australian designed, engineered and fabricated
- Thermal insulation blankets available for fire mitigation

100%  
COMPATIBLE

Interchange  
with OEM parts



Direct-fit  
system



Extended  
product lifecycle



Australian  
made



Fatigue zones  
improved



Mitigate fire  
with blankets

\*Note: Exhausts supplied in black



Competitive pricing compared to OEM products with long-term cost savings



Compatible with OEM parts and backed by our Direct-Fit Replacement Guarantee



Mitigate the risk of engine fires by adding blankets to critical heat components



**GLOBAL HEAD QUARTERS**  
Queensland, Australia  
T 1300 886 628  
sales@aletek.com.au  
www.aletek.com.au

**AUSTRALIA**  
New South Wales  
Queensland  
Victoria  
Western Australia

**USA**  
Arizona  
California  
Utah

**STH AMERICA**  
Chile  
Colombia  
Peru

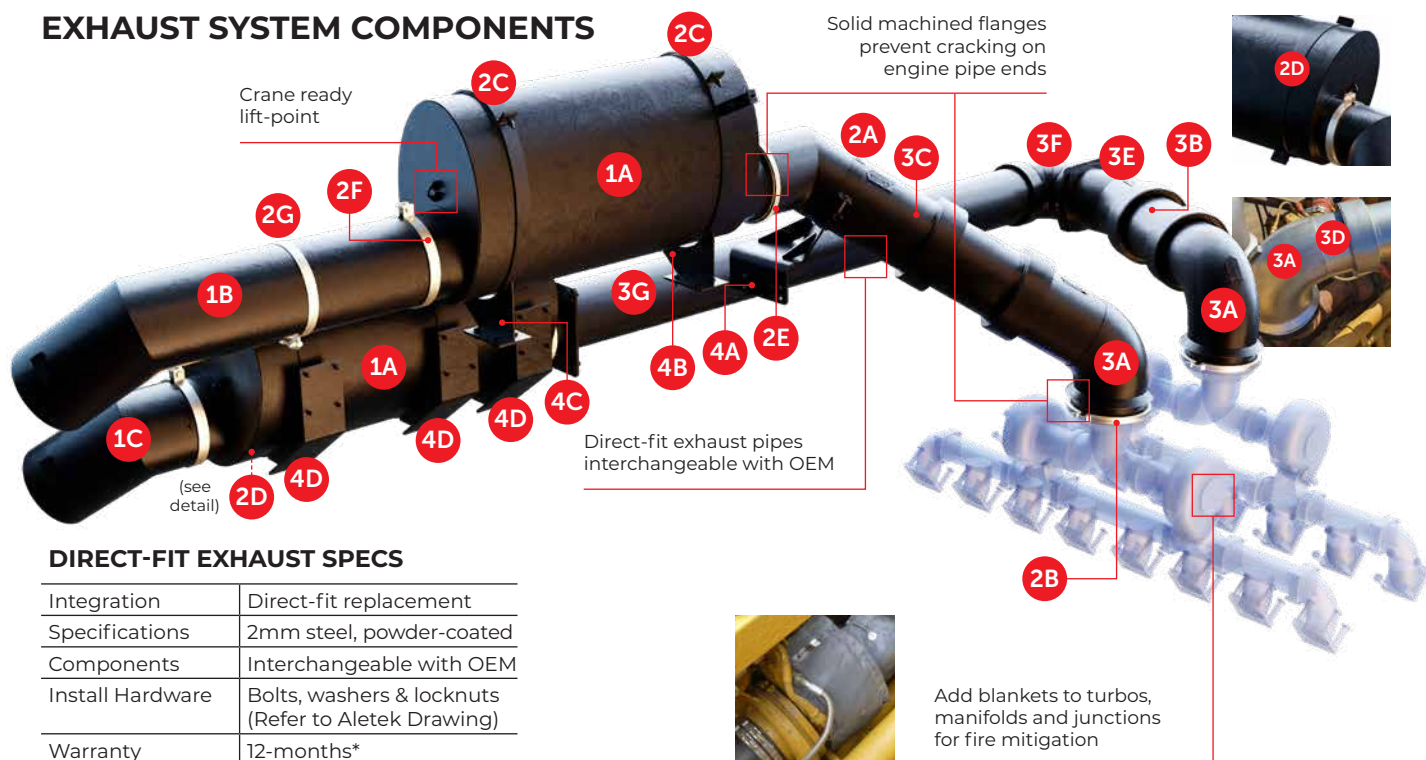
**INDONESIA**  
Kalimantan



## PRODUCT SPECIFICATIONS

# DIRECT-FIT EXHAUST FOR CAT 793C (3516)

## EXHAUST SYSTEM COMPONENTS



### DIRECT-FIT EXHAUST SPECS

Integration	Direct-fit replacement
Specifications	2mm steel, powder-coated
Components	Interchangeable with OEM
Install Hardware	Bolts, washers & locknuts (Refer to Aletek Drawing)
Warranty	12-months*
Aletek Drawing	ALE-169 (ATY 576-UP)



#### 1 MUFFLERS

Integration	Direct-fit
1A Muffler P/N	266-569
1B Tail Pipe P/N	290-680
1C Tail Pipe P/N	265-137



#### 2 CLAMPS & STRAPS

2A Strap P/N	290-571
2B V-Band P/N	399-250
2C Strap P/N	286-609
2D Strap P/N	218-243
2E V-Band P/N	373-909
2F Clamp P/N	288-503
2G Clamp P/N	220-662



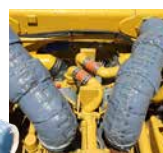
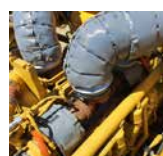
#### 3 ENGINE PIPES

Integration	Direct-fit
3A E/Pipe P/N	290-199
3B E/Pipe P/N	281-402
3C E/Pipe P/N	295-746
3D E/Pipe P/N	260-780
3E E/Pipe P/N	223-920
3F E/Pipe P/N	228-688
3G E/Pipe P/N	222-643

#### 4 BRACKETS

4A Bracket P/N	281-715
4B Bracket P/N	224-424
4C Bracket P/N	207-871
4D Bracket P/N	216-988

## THERMAL BLANKETS UPGRADE



### BLANKETS FOR 793C (Option)

The Aletek Advantage	Quick-fit springs, reduced install time, snug fit, non-itch
Aletek Drawing	ALE-3494 (ATY 202-UP)
Complete Kit P/N	110-414
Manifold Group P/N	123-963
Turbo Group P/N	188-904
Junction Group P/N	138-635
Engine Pipe Group	137-719