



PRODUCT SPECIFICATIONS

DIRECT-FIT EXHAUST FOR KOMATSU 830E-AC (QSK60)



**DUAL-WALL
EXHAUST
AVAILABLE**



DIRECT-FIT EXHAUST UPGRADE FOR 830E-AC

Aletek's exhaust system is a direct-fit replacement for Komatsu 830E-AC trucks. Our exhausts offer improvements to known OEM fatigue zones for durability and extended lifecycle.

- Solid machined flanges prevent cracking on engine pipe ends
- Compatible with Cummins engine specifications
- Exhaust pipes and components interchangeable with OEM parts
- Australian made and designed
- In-stock components include clamps, V-bands, tube pipe, etc
- Thermal insulation blankets available for fire mitigation

**100%
COMPATIBLE**

Interchange
with OEM parts



Direct-fit
system



Extended
product lifecycle



Australian
made



Fatigue zones
improved



Mitigate fire
with blankets

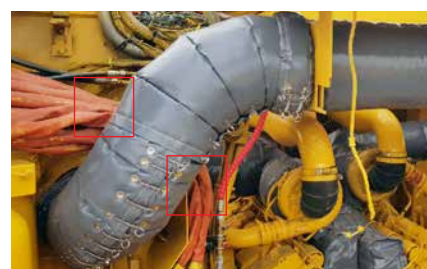
*Note: Exhausts supplied in black



Compatible with OEM parts and backed
by our Direct-Fit Replacement Guarantee



Competitive pricing compared to OEM
products with long-term cost savings



Add blankets to protect high voltage lines
against contact with hot exhaust surfaces



GLOBAL HEAD QUARTERS
Queensland, Australia
T 1300 886 628
sales@aletek.com.au
www.aletek.com.au

AUSTRALIA
New South Wales
Queensland
Victoria
Western Australia

USA
Arizona
California
Utah

STH AMERICA
Chile
Colombia
Peru

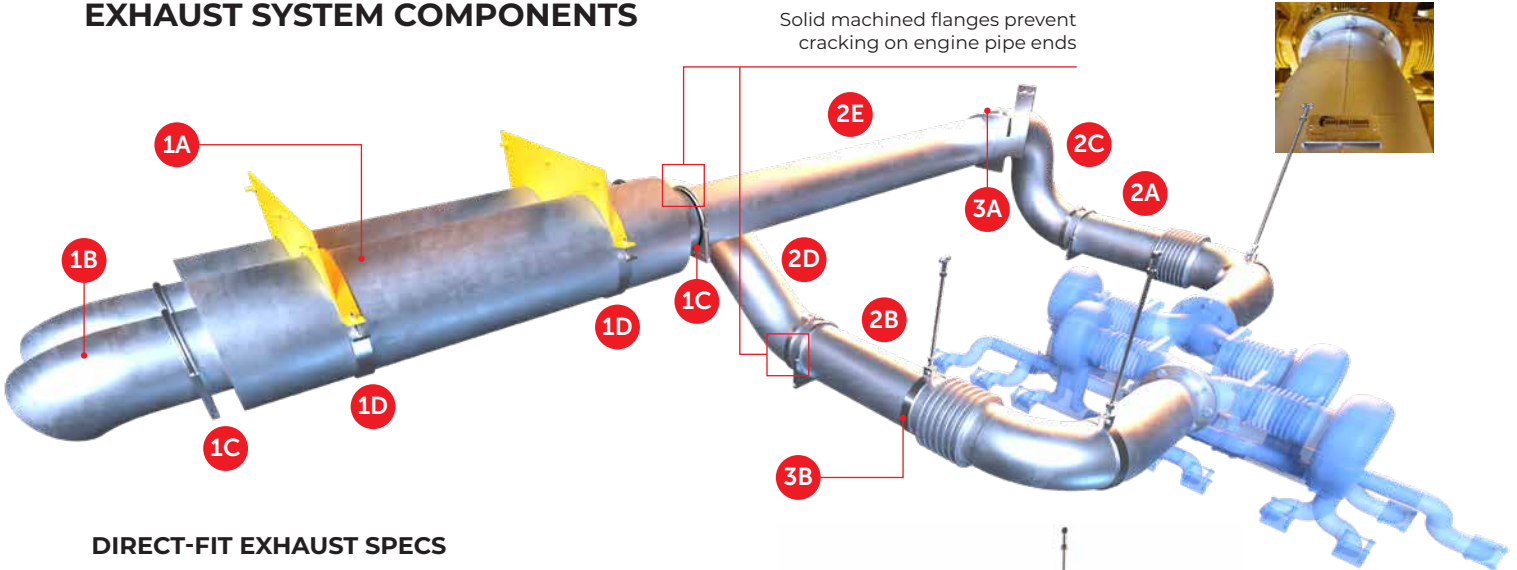
INDONESIA
Kalimantan



PRODUCT SPECIFICATIONS

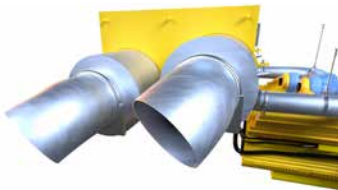
DIRECT-FIT EXHAUST FOR KOMATSU 830E-AC (QSK60)

EXHAUST SYSTEM COMPONENTS



DIRECT-FIT EXHAUST SPECS

| | |
|------------------|---|
| Integration | Direct-fit replacement |
| Specifications | 2mm steel, powder-coated |
| Components | Interchangeable with OEM |
| Install Hardware | Bolts, washers & locknuts (Refer to Aletek Drawing) |
| Warranty | 12-months* |
| Aletek Drawing | ALE-097 |



1 MUFFLERS

| | |
|------------------|----------------|
| Integration | Direct-fit |
| 1A Muffler P/N | 263-975 (each) |
| 1B Tail Pipe P/N | 258-383 |
| 1C Clamp P/N | 260-369 |
| 1D Clamp P/N | 283-701 |



3 CLAMPS

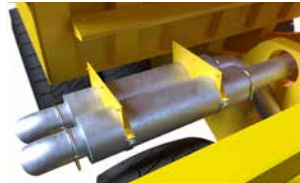
| | |
|----------------|-------------------------------|
| Specifications | High quality, easy to install |
| 3A V-Band P/N | 370-193 |
| 3B Clamp P/N | 251-403 ⁽¹⁾ |

⁽¹⁾ Refer to ALE-097 for rod & hardware



2 ENGINE PIPES

| | |
|-------------|------------|
| Integration | Direct-fit |
| 2A Part No. | 286-860 |
| 2B Part No. | 201-563 |
| 2C Part No. | 276-684 |
| 2D Part No. | 298-934 |
| 2E Part No. | 201-906 |



THERMAL BLANKETS UPGRADE



BLANKETS FOR 830E-AC (Option)

| | |
|----------------------|---|
| The Aletek Advantage | Quick-fit springs, reduced install time, snug fit, non-itch |
| Aletek Drawing | ALE-2727 |
| Complete Kit P/N | 142-180 |
| Manifold Group P/N | 198-821 |
| Turbo Group P/N | 157-690 |
| Junction Group P/N | 123-213 |
| Engine Pipe Group | 169-277 |

*Note: Exhausts supplied in black